

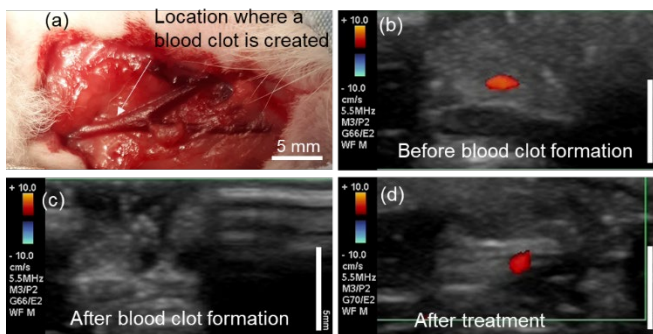
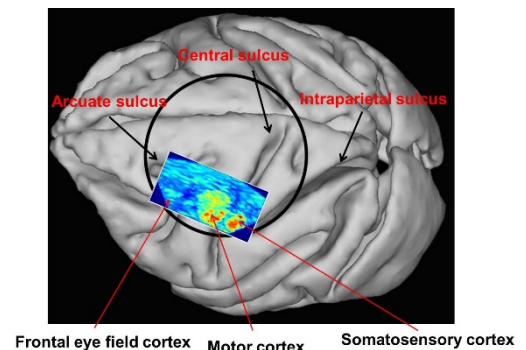
Biomedical Ultrasound and Laser Laboratory

Research Focus

Our lab develops medical tools based on ultrasound and laser for disease diagnosis and therapy

Research Areas

- Photoacoustic imaging
- High Intensity focused ultrasound
- Imaging-guided intervention



Collaborators

We collaborate with multiple researchers in biomedical engineering and medicine on multiple major research grants from National Institutes of Health. Current active collaborators include

Drs. Xueding Wang (U. Michigan), Yannis Paulus (U. Michigan), Randolph Nudo (KUMC), Jinxi Wang (KUMC), and M. Laird Forrest (KU Pharmacy). Our lab has also collaborated with both small and large companies and has licensed intellectual property.

Equipment

- 10 and 30 Hz high-power pulsed laser system
- High intensity focused ultrasound system
- Imaging systems for photoacoustic tomography and microscopy

Funding Sources

National Institutes of Health
Department of Defense
Medical device companies

Director:

Xinmai Yang, Ph.D.
Associate Professor,
Mechanical Engineering
xmyang@ku.edu

