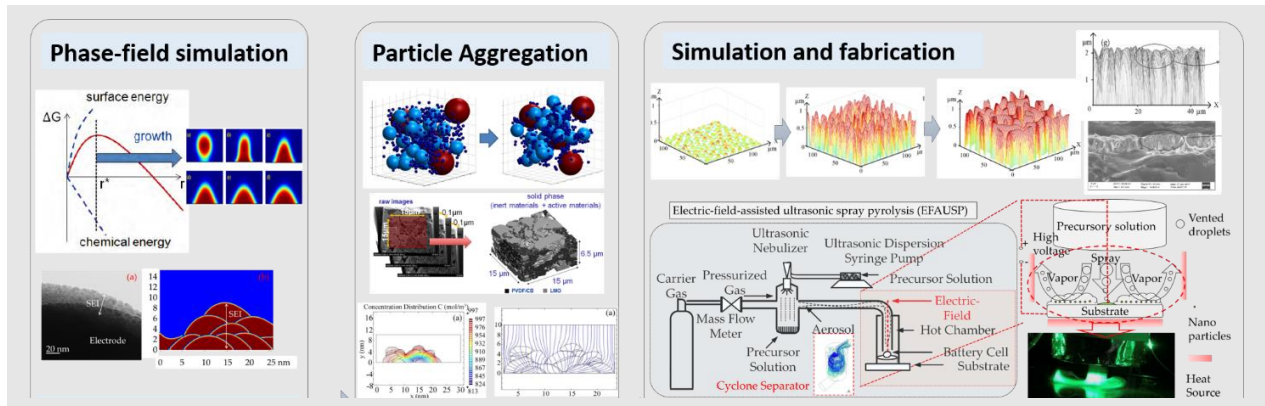


# Electrochemical Energy Lab

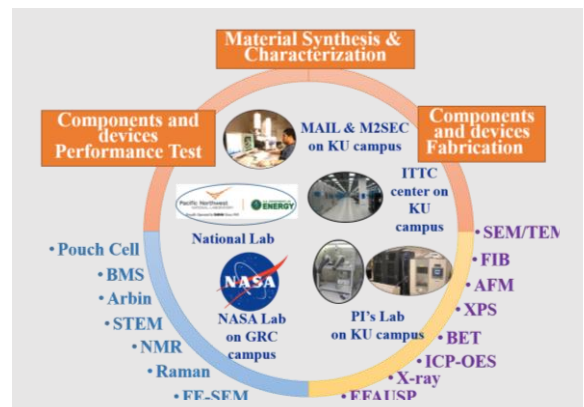
## Research Areas

Energy Storage; Energy Conversion; Multiscale and Multiphysics modeling; Advanced Manufacturing



## Collaborators

We collaborate with multiple researchers in mechanical engineering, chemical engineering, and materials science engineering at KU and worldwide (e.g., Canada, Germany). Our lab has also collaborated with local industries in Kansas and the United States.



## Equipment

- Mikrouna Dual Workstation Glovebox
- CHI 760E Bipotentiostat Electrochemical Workstation
- NEWARE 16-Channel Battery Tester
- Electric-Field-Augmented Ultrasonic Spray Pyrolysis (EFAUPS)

## Funding Sources

National Science Foundation, National Aeronautics and Space Administration, Kansas Board of Regents, industrial companies

### Director:

Lin Liu, PhD  
Associate Professor  
[linliu@ku.edu](mailto:linliu@ku.edu)  
<https://me.engr.ku.edu/lin-liu>



Go to [me.engr.ku.edu](https://me.engr.ku.edu) to learn more