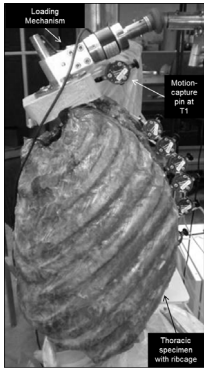


Spine Biomechanics and Structural Biomaterials Laboratory

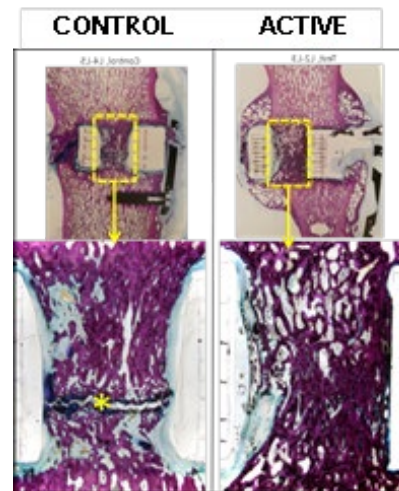
Research Areas

- Spine biomechanics
- Novel piezoelectric composites
- Mechanically Synced Electrical Stimulation (MSES)
- Implant design and development
- Mechanism of action of tissue healing in electrical stimulation



Collaborators

We collaborate with multiple researchers in mechanical engineering, bioengineering, and medicine at KU and from around the USA. Collaborators in KU Engineering include Profs. Fischer, Gehrke, Robinson, Spencer, Tamerler, and Wilson. Our lab has also collaborated with both small and large companies and has licensed intellectual property.



Equipment

- MTS servohydraulic test systems
- MTS Spine simulator
- ATS Spine Spine Test System
- LCR meter
- Trek high voltage power supply
- Precision machining equipment



Funding Sources

National Institutes of Health, National Science Foundation, Institute for Advancing Medical Innovation, SHARPhub, medical device companies

Director:

Lisa Friis, PhD
C.E. and M.J. Spahr
Professor and Chair
lfriis@ku.edu
kuspinelab.wixsite.com/friis

